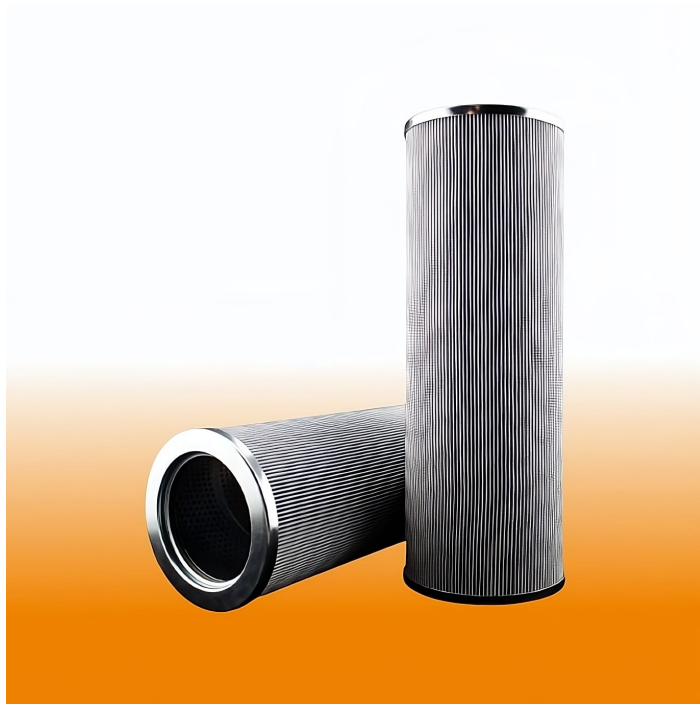




**ISO FILTRATION**  
QUALITY-SERVICE-VALUE

Source One N.A. LLC - ISO Filtration  
701 Green Valley Road  
Suite 100-1007  
Greensboro, NC 27408

## DIRECT REPLACEMENT FOR DIAGNETICS LPG516B25 HYDRAULIC FILTER ELEMENT



### SPECIFICATIONS:

<b>O.D.</b>	5.97"
<b>I.D. Top</b>	4.13"
<b>I.D. Bottom</b>	4.13"
<b>Length Overall</b>	16.80"
<b>Construction Type</b>	Double Open End, Optimized Microglass
<b>Efficiency</b>	20 Micron; B20 = 200, B26.6 = 1000 per ISO 16889
<b>Gasket Material</b>	Viton
<b>Wire Support</b>	Yes
<b>Max Operating Pressure</b>	160 PSID Collapse
<b>Max Temp</b>	230 Degrass F
<b>Weight Each</b>	6
<b>Carton Qty</b>	1
<b>Condition</b>	New

This ISO Filtration hydraulic filter element is a direct replacement for the **Diagnetics LPG516B25** hydraulic filter element in form, fit, and function. The optimized filter media provides fine filtration, long life, and high dirt-holding capacity.

- Made in **America** for assured performance
- Quality **ISO 9001:2015** certified manufacturing
- High-performance filter media tested to **ISO 16889** protocols

---

**SKU: L6507-357642**

Our filtration products are not suitable for Aviation applications. Registered Trademarks of indicated manufacturers are the property of those manufacturers and it is not our intent to imply that Source One N.A. is authorized or licensed to manufacture products under such manufacturer's name or trademark.

